



3 Ferndale Road
Gravesend DA12 5AF

£300,000



- 3 Bedroom Family Home
- In Need of Refurbishment
- Potential for a Garage to the Rear (STPP)
- No Chain



3 Ferndale Road, Gravesend, Kent, DA12 5AF



Are you looking for a project? Something you can turn into the perfect family home? Then Sealeys are pleased to offer this 3 BEDROOM MIDDLE TERRACE HOUSE situated just off Singlewell Road. With Gravesend Station only around a mile away this property is PERFECT FOR COMMUTERS. POTENTIAL FOR A GARAGE (STPP). NO CHAIN. EPC: TBC

PROPERTY DESCRIPTION

A three bedroom middle terraced family home, in need of some refurbishment. With its generous living space downstairs this property would be perfect for a growing family. Offered with no forward chain.

LOCATION DESCRIPTION

Located close to the ever popular Singlewell Road, around one mile from Gravesend station with excellent services to London (Gravesend to London St Pancras around 25 minutes). Only 1.3 miles to the A2 with links to London and the M25.

FRONT EXTERIOR

A small block built wall enclosing a small block paved frontage with a metal gate opening from the street. A few steps up to the glazed upvc front door opening into...

PORCH

Ideal for coats and shoes with a wooden door opening to...

HALLWAY

A generous hallway with stairs leading to the first floor. Windows either side of the wooden door give the hall its much needed light. Doors leading to...

LOUNGE

12'3" x 11'9" including back boiler area

The 1930s bay window to the front makes this room feel light and airy, wall hung gas fire with tiled surround.



DINING ROOM

13'5" x 10'9"

A similar size to the lounge means you have ample living space available. Double glazed patio doors out to garden with double glazed windows with side, flood the room with light. A mantle piece situated on the chimney breast ideal for pictures and ornaments. The dining room flows round to...

KITCHEN

10'2" x 6'9"

A galley style kitchen with a large opening into the dining room gives for a more spacious feel, with a range of wall and base units with roll top work surface. Space for under counter fridge or freezer, washing machine and space for free standing cooker into recess of chimney breast. A single bowl stainless steel sink and drainer with tiled splashback. A pantry ideal for storing those kitchen essentials and a double glazed window out to garden.

FIRST FLOOR

LANDING

All doors on the first floor have small windows above them to allow light into the landing area. Stairs to ground floor and doors leading to...

BEDROOM ONE

13'2" x 10'5"

The largest of the double bedrooms is situated to the rear of the property with the double glazed window looking out to garden. A built in wardrobe in recess next to chimney breast.

BEDROOM TWO

12'8" x 10'4"

A spacious neutrally decorated double bedroom with a double glazed bay window out to front.

BEDROOM THREE

7'4" x 7'2"

A neutrally decorated single bedroom with double glazed window out to front.

BATHROOM

7'8" x 7'3"

A mixer tap shower over bath, basin with double glazed frosted window over and a low level wc. Wall hung water heater, part tiled walls and laminate flooring.



REAR GARDEN

A generous garden mainly laid to lawn with an array of shrubs and bushes up each side. A rear access road entered from Lingfield Road with potential for a garage at the rear of the garden.


SERVICES

Mains Gas, Electricity, Water and Drainage

Council Tax: Gravesham Borough Council

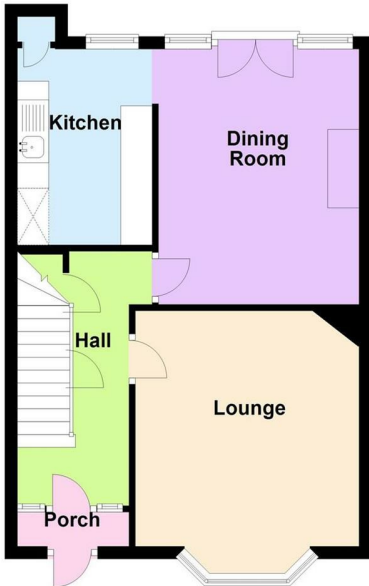
Band: C 2020/2021 Charges: £1,637.14

Energy Efficiency Rating

	Current	Potential
<i>Very energy efficient - lower running costs</i>		
(92 plus) A		
(81-91) B		
(69-80) C		
(55-68) D		
(39-54) E		
(21-38) F		
(1-20) G		
<i>Not energy efficient - higher running costs</i>		
England & Wales	EU Directive 2002/91/EC	



Ground Floor



First Floor



Scan me to see
the virtual viewing of this
property



184 Parrock Street
Gravesend
Kent
DA12 1EN

www.sealeys.co.uk
Email: sales@sealeys.co.uk
Tel: 01474 369368



Agents Note: Whilst every care has been taken to prepare these marketing particulars, they are for guidance purposes only. These details, description and measurements do not form part of a contract and whilst every effort has been made to ensure accuracy this cannot be guaranteed. Interested parties must satisfy themselves by inspection or otherwise as to the correctness of them. Floor plans are not to scale and are for illustration purposes only. Any equipment, fixtures and fittings or any item referred to have not been tested unless specifically stated.